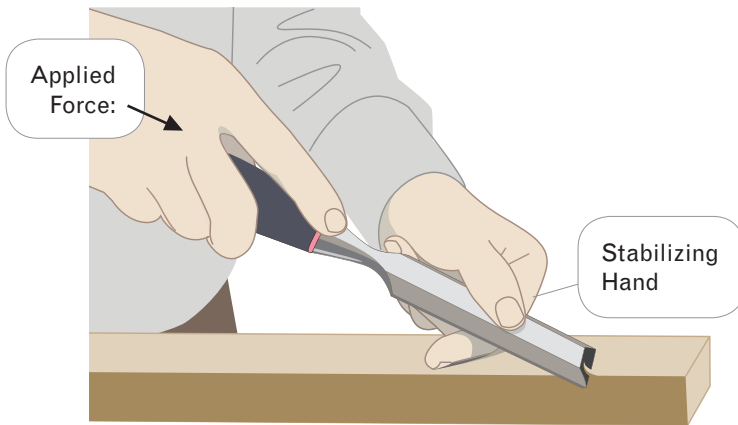




### Chisel Safety:

- Always keep your hands and body *behind* the chisel.
- Clamp your work down for stability.
- When taking off small amounts of wood use direct force with one hand while stabilizing with the second hand:



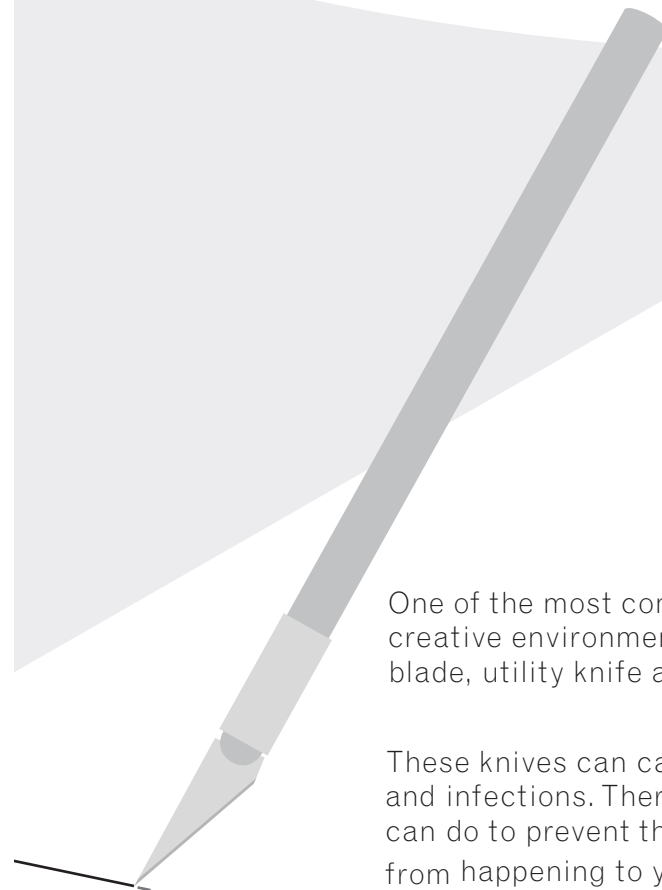
### Blade & knife storage while not in use:

- X-acto knife and chisel: Plastic safety cover.
- Utility knife: Retract blade into handle.

# X-ACTO KNIFE, UTILITY KNIFE, & CHISEL SAFETY

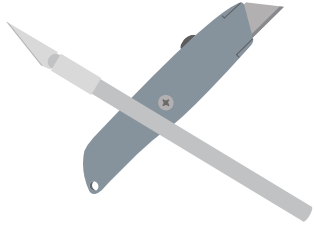
One of the most common injuries in a creative environment is from an X-Acto blade, utility knife and chisel.

These knives can cause severe lacerations and infections. There are a few things you can do to prevent this type of accident from happening to you...



Here are some common safety guides for all 3 tools:

- Determine if this is the right tool for the job - there are many different types of blades and utility knives for different purposes.

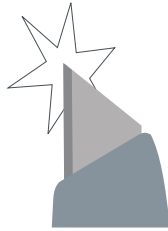


- Always use a sharp blade.

NO:



YES:



- Always wear safety glasses - a blade may break and fly away from the work surface.

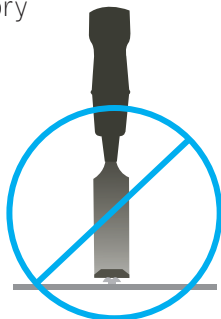
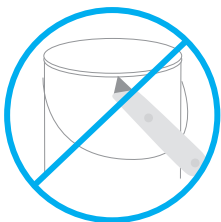
YES:



NO:



- Never use a knife or chisel to pry or tighten screws.



### X-Acto Knife & Utility Knife Safety:

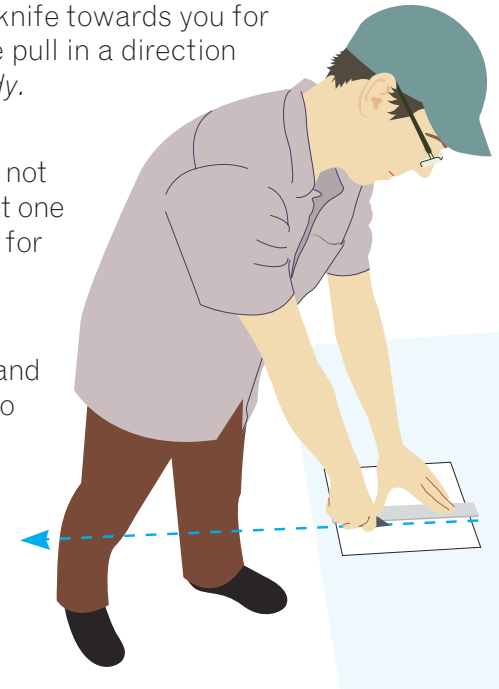
- Use a straight edge when cutting a straight line.



- As you will need to pull the knife towards you for control and strength, please pull in a direction that is *to the side of your body*.

- Make sure that your hand is not holding your straight edge at one point. Spread your hand out for more stability.

- Always score your line first and then make multiple passes to complete the cut.



- Your hand should *never* be in the path of the blade.

- When making a cut on a 3 dimensional piece make sure to use a clamp to hold your work in place. Your lap is not a good cutting surface!



- Kevlar gloves can prevent cuts due to slipping. The blade cannot penetrate the Kevlar yarn.