

NETWORKING

You can set your computer to access SAIC's network in several different ways. Computers can access the network on campus via SAIC's wireless or wired networks. All network settings are set in System Preferences in the Network window. SAIC's template comes pre-configured with these settings, so you will not have to make any modifications.

For each type of networking you would like your computer to access, there is a separate Location for each. These separate locations may be pre-set on your system or you may need to set them yourself. To switch between networking locations, simply click the Apple icon in your menu bar (top left corner of your screen) and select the type of networking from the Location sub-menu.

WIRED.ARTIC.EDU

To access the SAIC Wired network, plug your computer into an ethernet port and select the location from the Apple icon drop-down menu. wired.artic.edu is for network connection via an Ethernet cable connected to the SAIC network. This includes SAIC residence halls, labs and classrooms.

WIRELESS.ARTIC.EDU

To access wireless.artic.edu, make sure the location is selected in the Apple drop-down menu.

When you select wireless.artic.edu, a login window should appear to authenticate you as an SAIC user. Enter your ARTIC account login and password.

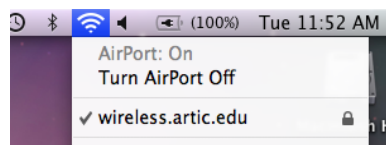
To check network status and signal strength, check the AirPort icon. It will appear greyed out when not connected and black when connected. Four bars represent full signal strength.

TROUBLESHOOTING

If the authentication window does not appear, select wireless.artic.edu from the AirPort icon menu in your menu bar at the top of your screen.

If the Wireless network fails to connect and present the Authentication window restart the AirPort by selecting "Turn AirPort Off" from the AirPort menu. Wait a few seconds, then select "Turn AirPort On." This should give you the 802.1X Authentication window.

Login as described above.



The first time you access the wireless network, you will be required to verify certificates. This should only have to be done once.

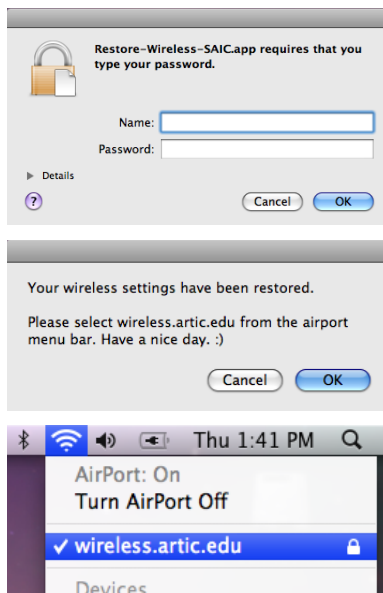
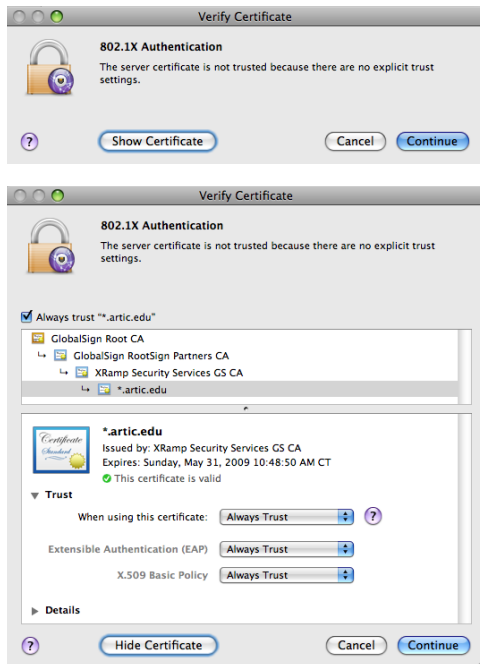
1. When the “Verify Certificate” alert pops up, click “Show Certificate.”
2. Check the box next to “Always trust ‘*.artic.edu’.”
3. Click the arrow next to the word “Trust.” The window will expand to reveal more information. Scroll to the bottom of that menu.
4. Make sure it reads “Always Trust” in the menu next to “When using this certificate:”
5. Click “Continue.”
6. When prompted, enter your username and password.

You should only have to accept this certificate once, unless your system’s settings are reset.

WIRELESS PROBLEMS?

If your networking settings have been changed and you are having difficulty connecting to the wireless network, click on the Start Here icon in your dock. You will find an icon called Restore-Wireless-SAIC. This tool will restore your wireless networking settings to the default SAIC template configuration.

After you click on the icon, you will be asked for your computer’s admin password. Follow the directions in the prompt by selecting wireless.artic.edu from the AirPort menu. You may be prompted to authenticate to the network by entering your username and password.



PLEASE NOTE THESE THINGS

- Use the locations wired.artic.edu and wireless.artic.edu for wired and wireless networks outside of SAIC (your home network, cafes with WiFi, etc.). These settings should work for whatever network you connect to.
- Do not connect to other networks (i.e. other WiFi, cellular or WiMAX networks) while connected to wireless.artic.edu or other Art Institute of Chicago networks.
- Use wired.artic.edu for printing and other network intensive activities. You cannot print on the wireless network.
- Please do not configure software basestations or create computer-to-computer networks.
- Remember that SAIC’s network is a shared resource. Your activities affect others. For a review of the policies and guidelines you agree to, go to <https://startit.artic.edu/kb/artic/general/aup.html>
- You can find more information about the SAIC networks (policies, setup, etc.) at <http://wireless.artic.edu/>