

## FULL LIST OF WORKS IN THE EDLIS/NEESON COLLECTION

### Paintings and Sculptures



Jasper Johns. *Target*, 1961.  
The Art Institute of Chicago, Gift of Edlis/Neeson  
Collection.



Jasper Johns. *Figure 4*, 1959.  
The Art Institute of Chicago, Gift of Edlis/Neeson  
Collection.



Jasper Johns. *Alphabet*, 1959.  
The Art Institute of Chicago, Gift of Edlis/Neeson  
Collection.



Robert Rauschenberg. *Untitled*, circa 1955.  
The Art Institute of Chicago, Gift of Edlis/Neeson  
Collection.



Andy Warhol. *Flowers*, 1964.  
The Art Institute of Chicago, Gift of Edlis/Neeson  
Collection.



Andy Warhol. *Twelve Jackies*, 1964.  
The Art Institute of Chicago, Gift of Edlis/Neeson  
Collection.



Andy Warhol. *Self-Portrait*, 1964.  
The Art Institute of Chicago, Gift of Edlis/Neeson  
Collection.



Andy Warhol. *Little Race Riot*, 1964.  
The Art Institute of Chicago, Gift of Edlis/Neeson  
Collection.



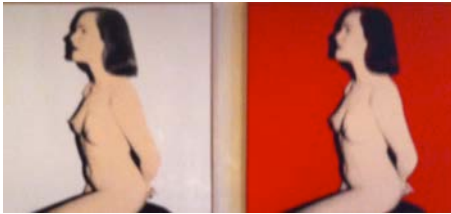
Andy Warhol. *Self-Portrait*, 1966.  
The Art Institute of Chicago, Gift of Edlis/Neeson  
Collection.



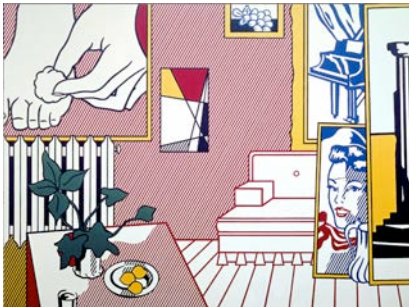
Andy Warhol. *Big Electric Chair*, 1967-68.  
The Art Institute of Chicago, Gift of Edlis/Neeson  
Collection.



Andy Warhol. *Mona Lisa Four Times*, 1978.  
The Art Institute of Chicago, Gift of Edlis/Neeson  
Collection.



Andy Warhol. *Pat Hearn (diptych)*, 1985.  
The Art Institute of Chicago, Gift of Edlis/Neeson  
Collection.



Roy Lichtenstein. *Artist's Studio "Foot Medication"*,  
1974. The Art Institute of Chicago, Gift of  
Edlis/Neeson Collection.



Roy Lichtenstein. *Woman III*, 1982.  
The Art Institute of Chicago, Gift of Edlis/Neeson  
Collection.



Gerhard Richter. *Hunting Party*, 1966.  
The Art Institute of Chicago, Gift of Edlis/Neeson  
Collection.



Gerhard Richter. *Stadtbild*, 1968.  
The Art Institute of Chicago, Gift of Edlis/Neeson  
Collection.



Gerhard Richter. *Davos*, 1981.  
The Art Institute of Chicago, Gift of Edlis/Neeson  
Collection.



Gerhard Richter. *Venedig (Treppe)*, 1985.  
The Art Institute of Chicago, Gift of Edlis/Neeson  
Collection.



Brice Marden. *Study for the Muses (Eagles Mere Version)*, 1991-94/1997-99.  
The Art Institute of Chicago, Gift of Edlis/Neeson Collection.



Cy Twombly. *Untitled*, 1953.  
The Art Institute of Chicago, Gift of Edlis/Neeson Collection.



Cy Twombly. *Untitled (Bolsena)*, 1969.  
The Art Institute of Chicago, Gift of Edlis/Neeson Collection.



Jeff Koons. *Christ and the Lamb*, 1988.  
The Art Institute of Chicago, Gift of Edlis/Neeson Collection.



Jeff Koons. *Bourgeois Bust – Jeff and Ilona*, 1991.  
The Art Institute of Chicago, Gift of Edlis/Neeson  
Collection.



Damien Hirst. *Still*, 1994.  
The Art Institute of Chicago, Gift of Edlis/Neeson  
Collection.



Charles Ray. *Boy*, 1992.  
The Art Institute of Chicago, Gift of Edlis/Neeson  
Collection.



Katharina Fritsch. *Frau mit Hund (Woman with Dog)*, 2004. The Art Institute of Chicago, Gift of Edlis/Neeson Collection.



Eric Fischl. *Slumber Party*, 1983. The Art Institute of Chicago, Gift of Edlis/Neeson Collection.



John Currin. *Stamford After Brunch*, 2000. The Art Institute of Chicago, Gift of Edlis/Neeson Collection.



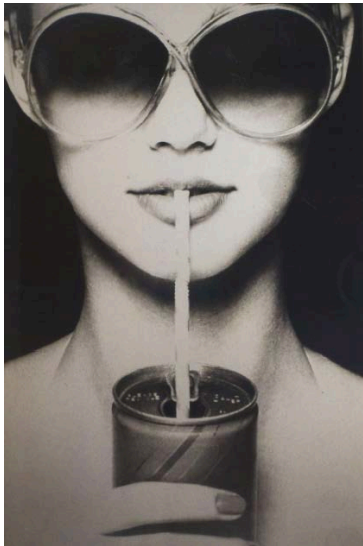
Takashi Murakami. *Mr. Pointy*, 2011. The Art Institute of Chicago, Gift of Edlis/Neeson Collection.





Andy Warhol. *Liz #3 [Early Colored Liz]*, 1963.  
The Art Institute of Chicago, Partial and Promised  
gift of Stefan T. Edlis.

### Photography



Richard Prince. *Untitled (fashion)*, 1982-84.  
The Art Institute of Chicago, Gift of Edlis/Neeson  
Collection.



Richard Prince. *Untitled (cowboy)*, 1986.  
The Art Institute of Chicago, Gift of Edlis/Neeson  
Collection.



Richard Prince. *Untitled (cowboy)*, 1987.  
The Art Institute of Chicago, Gift of Edlis/Neeson  
Collection.



Richard Prince. *Untitled (girlfriend)*, 1993.  
The Art Institute of Chicago, Gift of Edlis/Neeson  
Collection.



Richard Prince. *Untitled (girlfriend)*, 1993.  
The Art Institute of Chicago, Gift of Edlis/Neeson  
Collection.



Richard Prince. *Untitled (girlfriend)*, 2000.  
The Art Institute of Chicago, Gift of Edlis/Neeson  
Collection.



Cindy Sherman. *Untitled #86*, 1981.  
The Art Institute of Chicago, Gift of Edlis/Neeson  
Collection.



Cindy Sherman. *Untitled #87*, 1981.  
The Art Institute of Chicago, Gift of Edlis/Neeson  
Collection.



Cindy Sherman. *Untitled #90*, 1981.  
The Art Institute of Chicago, Gift of Edlis/Neeson  
Collection.



Cindy Sherman. *Untitled #92*, 1981.  
The Art Institute of Chicago, Gift of Edlis/Neeson  
Collection.



Cindy Sherman, *Untitled #93*, 1981.  
The Art Institute of Chicago, Gift of Edlis/Neeson  
Collection.



Cindy Sherman. *Untitled #96*, 1981.  
The Art Institute of Chicago, Gift of Edlis/Neeson  
Collection.