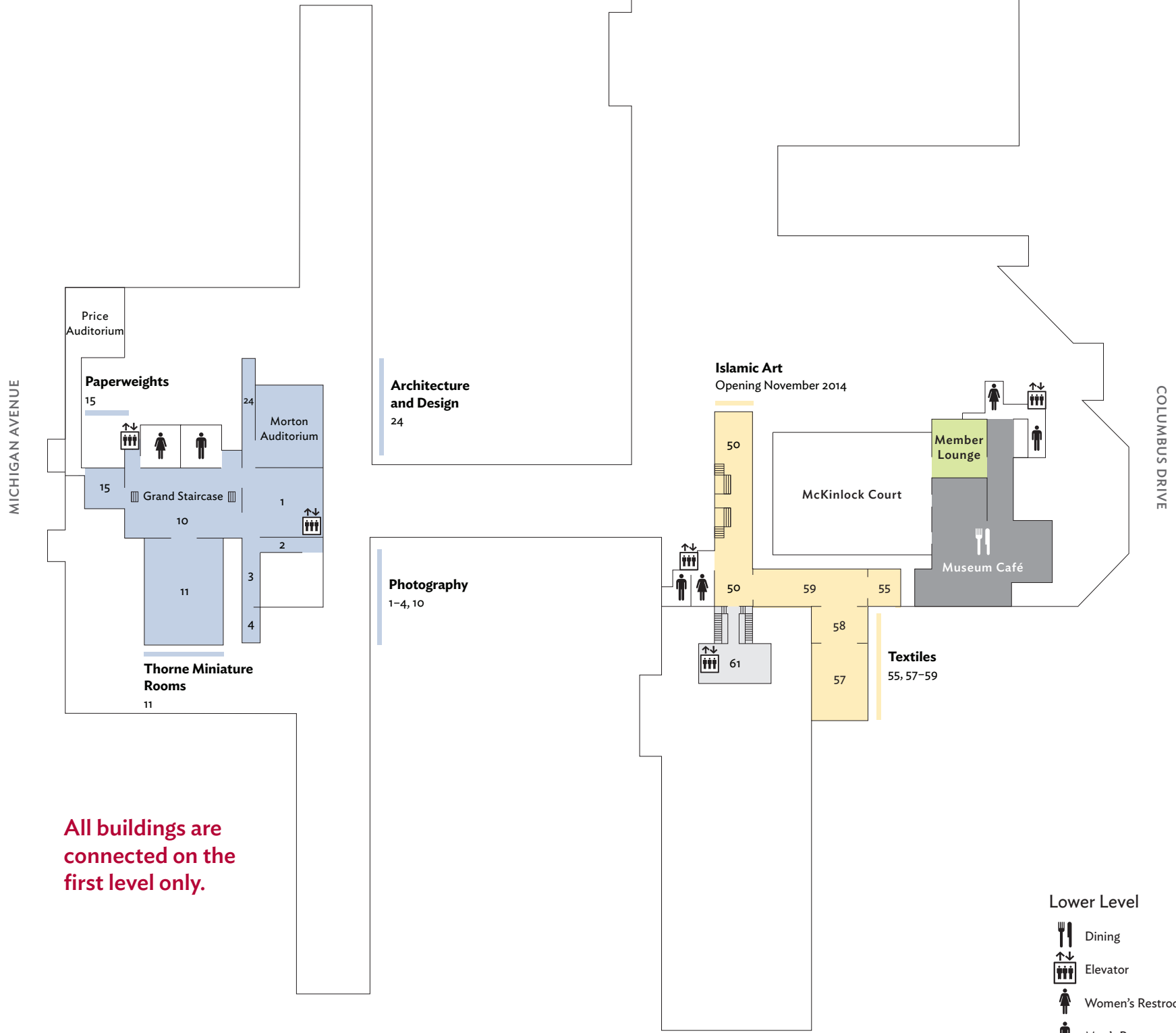




Photography 1-4, 10	
Thorne Miniature Rooms 11	
Paperweights 15	
Architecture and Design 24	
Islamic Art 50	
Textiles 55, 57-59	
Museum Café A variety of healthy and delicious options including a new kids menu	
Member Lounge Relax, recaffeinate, renew—free coffee plus cocktails, wine, and beer for purchase	



All buildings are connected on the first level only.

- Lower Level
- Dining
 - Elevator
 - Women's Restroom
 - Men's Restroom

The Art Institute is made up of many different buildings. All buildings are connected on the first level only.

LAKE MICHIGAN
COLUMBUS DRIVE

Visitor Information

Lower Level

First Level

Second Level

Third Level

Indian, Southeast Asian, and Himalayan Art
140-143



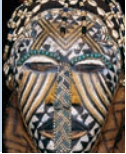
Chinese, Japanese, and Korean Art
101-109, 130-135



Indian Art of the Americas
136



African Art
137



Prints and Drawings
124-127



Greek, Roman, and Byzantine Art
150-154



Chagall's America Windows
144



American Art before 1900
161, 163-179



American Decorative Arts
1920-1970
162



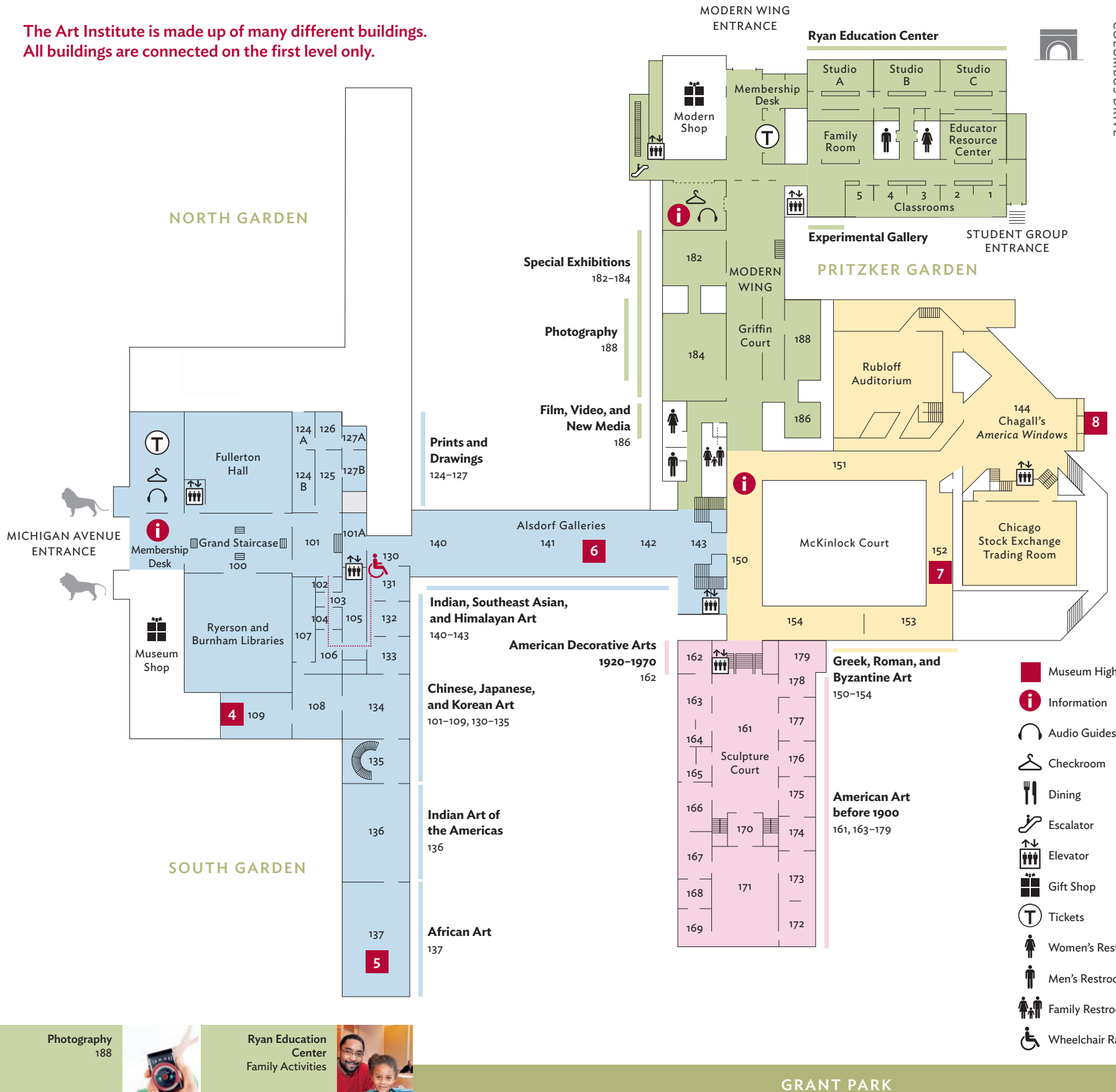
Film, Video, and New Media
186

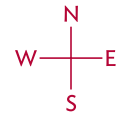


Photography
188



Ryan Education Center
Family Activities





Visitor Information
 Lower Level
 First Level
 Second Level
 Third Level

LAKE MICHIGAN
 COLUMBUS DRIVE

- Chicago Architecture 200 
- American Folk Art 227 
- European Art before 1900 201-248 
- Prints and Drawings 202A-226A 
- Impressionism 225-226, 201, 240-243 
- European Decorative Arts 231-234 
- Arms and Armor 235-237 
- Architecture and Design 283-286 
- Contemporary Art 1945-1960 289 
- Contemporary Art after 1960 288, 291-299 



All buildings are connected on the first level only.

- Second Level**
-  Museum Highlight
 -  Information
 -  Dining
 -  Escalator
 -  Elevator
 -  Women's Restroom
 -  Men's Restroom
 -  Wheelchair Ramp

Modern American Art 1900-1950
261-265, 271-273



Café Moderno
Soups, salads, panini, and beverages in a quick-order setting



3

Modern Art
389-399



Contemporary Sculpture
Bluhm Family Terrace

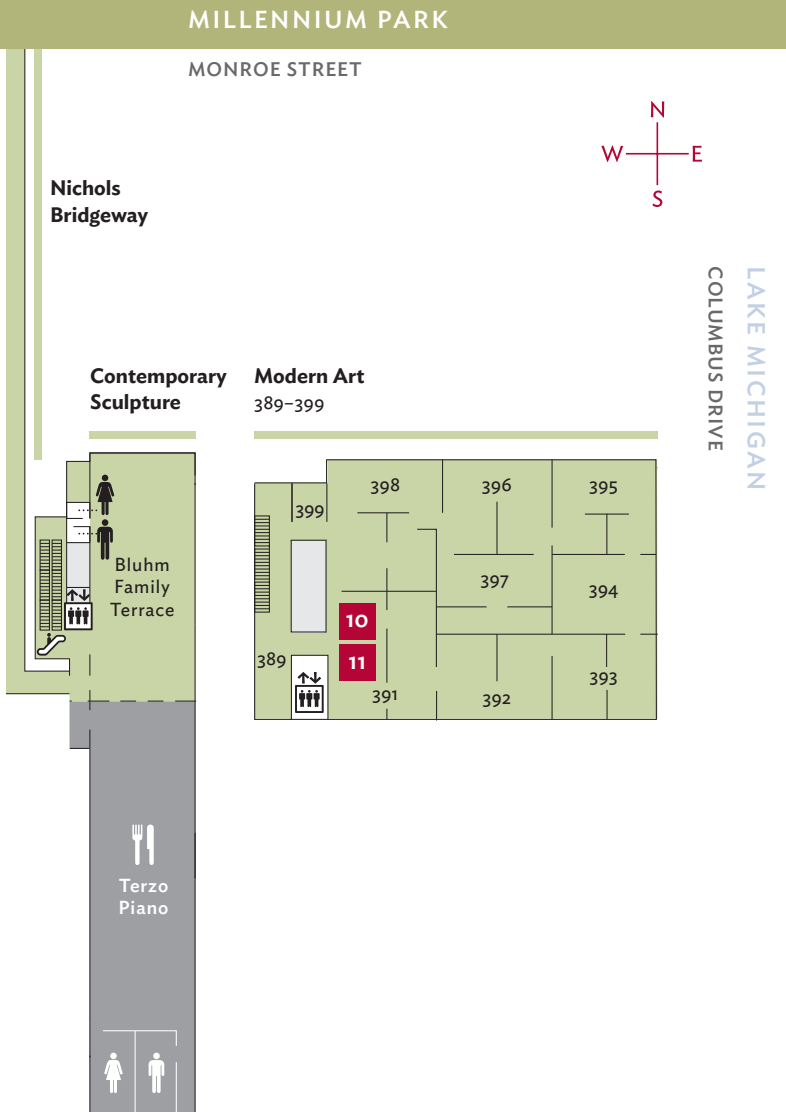


Terzo Piano
Modern Italian cuisine from a team headed by award-winning chef Tony Mantuano



Third Level

- Museum Highlight
- Dining
- Escalator
- Elevator
- Women's Restroom
- Men's Restroom



IRELAND

Crossroads of Creativity, 1690-1840



MARCH 17-JUNE 7, 2015

Robert Fagan. *Portrait of a Lady as Hibernia (detail)*, c. 1801. Private Collection.

Annual support for Art Institute exhibitions is provided by the Exhibitions Trust: Goldman Sachs, Kenneth and Anne Griffin, Thomas and Margot Pritzker, the Earl and Brenda Shapiro Foundation, and the Woman's Board of the Art Institute of Chicago.



Valet Parking

Modern Wing Entrance
\$25 per car at drop-off

No more circling, no more meters, no more trips underground—valet parking is here! Art Institute visitors can now drop off their cars at the Modern Wing entrance (159 East Monroe Street) and walk right into the museum. The valet service is available daily from 10:30 a.m. until one-half hour after closing. **Cash only, please.**

*Rates are subject to change with citywide special events.



Tours on Your Smartphone

Take advantage of the Art Institute's Wi-Fi network by downloading our free apps. "Art Institute Tours" (available for Apple and Android devices) offers more than 50 ways to navigate the museum, including step-by-step directions. Tours are in English, with one tour in Mandarin Chinese. "Art Institute Closer" (available for Apple devices only) features additional multimedia information on select works of the museum's modern art collection, with more collections to come. "Closer" is in English only.

Bloomberg Philanthropies
Supported by