



Reading Between The Lions The Art Institute's Book Club

www.artic.edu/bookclub

Katharine Kuh made significant contributions to the Art Institute's collection, particularly to the portion of the collection now hanging in the Modern Wing. Come see the works currently on view, listed below.

BEQUESTS:

Kuh gave these works to the Art Institute following her death.

Titles in gray are accompanied by images.

Houses at Murnau (1909) by Vasily Kandinsky

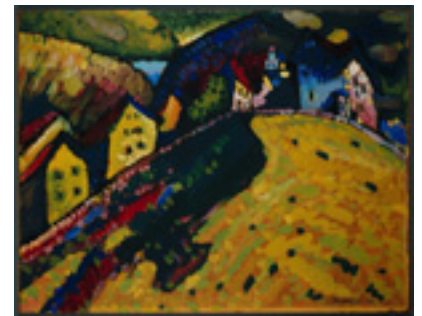
G392

"Acrobat" Upside Down Figure (1926) by Gaston Lachaise

G264*

Composition with Statuette (1950) by Fernand Leger

Kraft Education Center*



SELECTED ACQUISITIONS:

Kuh had some hand in acquiring the works below, whether it was buying them outright or persuading private collectors to donate them to the museum.

Figure with Meat (1954) by Francis Bacon

G399

Tall Figure (1947) by Alberto Giacometti

G398B

Twin Figures (1938) by Jean Helion

G398C

Divers on a Yellow Background (1941) by Fernand Leger

G398C

Abstraction: Background with Blue Cloudy Sky (1930) by Pablo Picasso

G396A

Self-Portrait (1937) by Max Beckmann

G395A

Leda (c. 1920) by Constantin Brancusi

G395B

Still Life (1928) by Fernand Leger

G394



The Red Armchair (1931) by Pablo Picasso

G394

Still Life (1924) by Pablo Picasso

G394

Mother and Child (1921) by Pablo Picasso

G394

Lozenge Composition with Yellow, Black, Blue, Red, and Gray (1921) by Piet Mondrian

G393A

Edtaonisl (Ecclesiastic) (1913) by Francis Picabia

G393A

Interior at Nice (1919 or 1920) by Henri Matisse

G393B

Seated Nude (1925–29) by Henri Matisse

G393B

Stags (1914) by Henri Gaudier-Brzeska

G392A

Girl with the Green Face (1910) by Alexei Jawiensky

G392A

Bathers by a River (1909–10, 1913, 1916–17) by Henri Matisse

G391A

The Railway Crossing (Sketch) (1919) by Fernand Leger

G391B

Woman with a Fan (1913) by Jean Metzinger

G391B

Portrait of Juanita Obrador (1918) by Joan Miró

G391B

Wisdom (c.1908) by Constantin Brâncusi

G391B

Portrait of Pablo Picasso (1912) by Juan Gris

G391B

The Checkerboard (1915) by Juan Gris

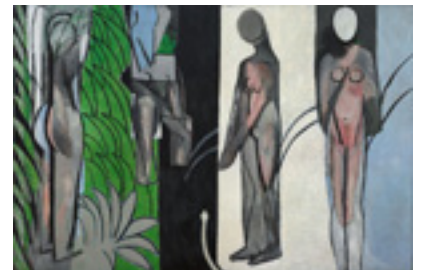
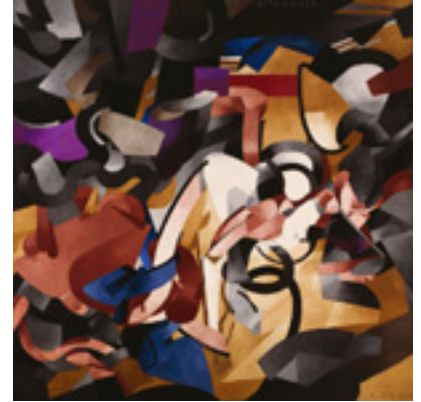
G391B

Champs de Mars: The Red Tower (1911/23) by Robert Delaunay

G391B

Horse (1914) by Raymond Duchamp-Villon

G391B



Portrait of Sylvette David (1954) by Pablo Picasso
G390

Tanktotem I (1952) by David Smith
G289A*

City Landscape (1955) by Joan Mitchell
G289B

Streetcar (1951) by Alexander Calder
G289B

Greyed Rainbow (1953) by Jackson Pollock
G289B

Untitled (Painting) (1953–54) by Mark Rothko
G289C

Portrait of Marevna (c.1915) by Diego Rivera
G271*

By-Products Plants (1923/26) by Joseph Stella
G271*

Green Mountains, Canada (1932) by Georgia O'Keeffe
G265*

Red and Pink Rocks and Teeth (1938) by Georgia O'Keeffe
G265*

Ready-to-Wear (1955) by Stuart Davis
G262*

That Which I Should Have Done I Did Not Do (The Door) (1931–41) by Ivan Albright
G262*

The Rock (1944–48) by Peter Blume
G262*

Lights of Other Days (1906) by John F. Peto
G173*



* Located in the American art galleries, not in the Modern Wing.