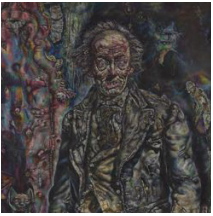


# Mini-Tour

ART  
INSTITUTE  
CHICAGO

## Cultural Distance: Quarter-Mile Tour B \*

You always knew art was good for you; now here's proof. This self-guided tour, part of our new Art of Wellness series, leads you on a quarter-mile circuit through the galleries, guiding you to old favorites and hidden gems within our collection. Walk at your own healthy pace, and be sure to make the most of your experience by taking in the art and architecture along the way.



GALLERY 262

*Picture of Dorian Gray* (1943–44) by Ivan Albright

This portrait was created for use in the Oscar-winning movie adaptation of Oscar Wilde's 1891 novel. Though the film was shot in black-and-white, the scenes of the portrait were shown in color to bring this lurid portrait to life.



GALLERY 263

*Nightlife* (1943) by Archibald John Motley Jr.

This Chicago artist was inspired by Edward Hopper's *Nighthawks* (in Gallery 262), but Motley's painting—showing the great vitality of these sophisticated urbanites—exudes an energy quite opposite that of Hopper's work.



GALLERY 265

*Miss Expanding Universe* (1932) by Isamu Noguchi

Notice how the sculpture flying high above you reflects the streamlined aesthetic of the 1930s. It is also influenced by the Japanese heritage of this American-born artist.



GALLERY 271

*Still Life* (1911) by Max Weber

You are among the first to see this new addition to the Art Institute of Chicago's ever-growing permanent collection.

\*Distance is estimated and will vary for each person depending on how much you explore each gallery. Please make modifications based on your fitness level by using elevators and resting when needed.



GALLERY 161

## Sculpture Court

Make your way to the lower level and enjoy this surprising space. The light from the skylights can give the illusion of warmth on a cold Chicago day.



GALLERY 165

## *Richard Bill* (1733) by John Smibert

This classic three-quarter-length portrait of a businessman was created before the United States became a nation.



GALLERY 171

## *Peach Blossoms* (1878) by Winslow Homer

You may be more familiar with Homer's *Croquet Scene*, also in this gallery, but look for this later work of a young lady resting on a stone wall.



GALLERY 173

## *The Irish Question* (c. 1880s) by De Scott Evans

This trompe-l'oeil painting certainly fools the eye. What Irish question is it meant to answer... or ask?



GALLERY 177

## *Henry Ossawa Tanner* (1891/96) by Herman Dudley Murphy

Painted by African American artist Herman Dudley Murphy, this portrait shows Henry Ossawa Tanner, whose painting *The Two Disciples at the Tomb* (currently on loan) was acquired by the museum in 1906.



GALLERY 144

## *Maquette for Richard J. Daley Center Monument* (1965)

by Pablo Picasso

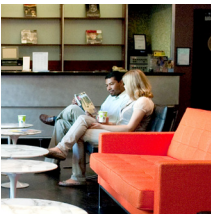
Take the stairs up one level to see the model of Picasso's 50-foot-tall sculpture, located at the Richard J. Daley Civic Center Plaza.



## *Chicago Stock Exchange Trading Room* (1893–94)

by Dankmar Adler and Louis Sullivan

Go down one level, and explore this impressive room often used for special events at the museum. Reconstructed in 1976–77, this space includes fragments of the original room, including Sullivan's stenciled decorations.



## Member Lounge

Take the stairs down another level to the Member Lounge, and reward yourself with a complimentary cup of coffee! Nonmembers, present this tour for one-time admission to the lounge. Don't forget—Member Happy Hour occurs here every Thursday, 5:00–7:30.