

# Mini-Tour

ART  
INSTITUTE  
CHICAGO

## Cultural Distance: One-Mile Tour \*

You always knew art was good for you; now here's proof. This self-guided tour, part of our new Art of Wellness series, leads you on a one-mile circuit through the galleries, guiding you to old favorites and hidden gems within our collection. Walk at your own healthy pace, and be sure to make the most of your experience by taking in the art and architecture along the way.



GALLERY 201

***Near the Lake*** (1879/80) by Pierre-Auguste Renoir

This light and airy painting by the master Impressionist Renoir makes you want to sit back and take a deep, refreshing breath.



GALLERY 242

***At the Moulin Rouge*** (1892/95) by Henri de Toulouse-Lautrec

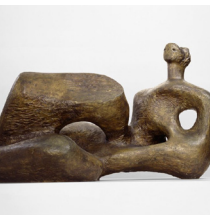
This painting of Paris's famous cabaret was cut down after the artist's death removing the now-iconic green face. It was restored sometime before 1924.



GALLERY 243

***Stacks of Wheat (Thaw, Sunset)*** (1890/91) by Claude Monet

Did you know the Art Institute of Chicago has one of the largest collections of Impressionist paintings outside of France? Just try to choose your favorite among Monet's beloved stacks of wheat.



GALLERY 389

***Maquette for UNESCO Reclining Figure*** (1957) by Henry Moore

Continue through Post-Impressionism and turn left into the Modern Wing. Take the stairs or elevator to the third level. Pause to stretch by this Henry Moore sculpture and take in the unique view from the south-facing windows.

\*Distance is estimated and will vary for each person depending on how much you explore each gallery. Please make modifications based on your fitness level by using elevators and resting when needed.



GALLERY 391

### *Horse* (1914) by Raymond Duchamp-Villon

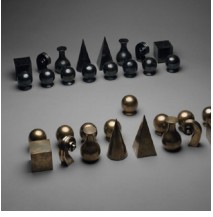
This bronze sculpture was cast long after the artist's death by his brothers Jacques Villon and Marcel Duchamp.



GALLERY 393

### *Woman before an Aquarium* (1921–23) by Henri Matisse

Is the woman looking at the fish, or are the fish looking at the woman?



GALLERY 396

### *Chess Set* (1927) by Man Ray

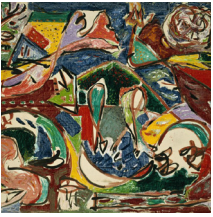
This playful piece provoked a lively exchange when it was written about recently on the museum's blog. After your visit, check out the discussion at [blog.artic.edu](http://blog.artic.edu).



GALLERY 292

### *Hinoki* (2007) by Charles Ray

If this were a walk in the woods, you might be tempted to rest on this log, but please don't do that here!



GALLERY 289

### *The Key* (1946) by Jackson Pollock

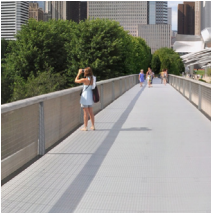
This quasi-Surrealist painting was made the year before the artist began making his celebrated drip paintings.



### *Chicago Stock Exchange Building Entrance Arch* (1893–94)

by Dankmar Adler and Louis Sullivan

It's time for some fresh air! Exit the Modern Wing, turn right, and walk to the arch at the corner. This architectural masterpiece was saved from the 1972 demolition of the Chicago Stock Exchange Building.



### Nichols Bridgeway

Return to the Modern Wing and take the west elevator (near the checkroom) to the third level. Step out onto the Nichols Bridgeway, and enjoy the spectacular views during your one-eighth-mile journey down the bridge. Did you know this bridge is heated in the winter?



### Modern Wing from Millennium Park

Continue north and complete your impressive one-mile art trek in Millennium Park. Turn around to look back at the Modern Wing. This 264,000-square-foot structure, designed by Pritzker Prize-winning architect Renzo Piano, opened in May 2009 and makes the Art Institute the second-largest art museum in the United States.