

# Mini-Tour

ART  
INSTITVTE  
CHICAGO

## Cultural Distance: Half-Mile Tour \*

You always knew art was good for you; now here's proof. This self-guided tour, part of our new Art of Wellness series, leads you on a half-mile circuit through the galleries, guiding you to old favorites and hidden gems within our collection. Walk at your own healthy pace, and be sure to make the most of your experience by taking in the art and architecture along the way.



GALLERY 11

### *Virginia Parlor, 1758–87* (c. 1940) by Mrs. James Ward Thorne

This room is modeled after the parlor of George Washington's home, Mount Vernon. The historical reconstruction of the presidential home had not yet begun in the 1940s, so it is shown here without its characteristic blue wall color.



GALLERY 15

### Paperweight Collection

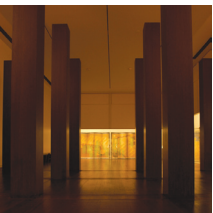
Enjoy a walk around the staircase in one of our newest galleries for photography; then find the paperweight collection. Can you choose a favorite among the 342 works on display?



GALLERY 101

### *Buddhist Votive Stele* (551), China

Take the stairs or elevator up one level to Gallery 101, and enjoy impressive works from China, Korea, and Japan, including this monumental inscribed stele.



GALLERY 109

### *Ando Gallery* (1992) by Tadao Ando

Explore the galleries filled with historic and contemporary Asian art as you make your way to this room designed by Pritzker Prize-winning Japanese architect Tadao Ando. Take a peaceful moment to yourself in this meditative space.

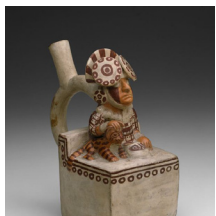
\*Distance is estimated and will vary for each person depending on how much you explore each gallery. Please make modifications based on your fitness level by using elevators and resting when needed.



GALLERY 137

***Wedding Ensembles for the Bride (Umtshakazi) and Groom (Umyeni) (1950s), South Africa, Thembu***

Displayed in the far right of the new African art gallery, these ensembles integrate traditional and modern elements.



GALLERY 136

***Vessel Representing a Seated Ruler with Pampas Cat (250/550), Peru, Moche***

Return the way you came, back into the gallery of Indian art of the Americas. Turn left and find this work from the north coast of Peru. To our modern eyes, the cat looks like pet, but it is meant to represent the power of a jungle animal.



GALLERY 237

***Half Armor and Targe for Service on Foot (c. 1600), Italy***

Take the spiral stairs up one level, and enjoy highlights from the Art Institute's beloved arms and armor collection. This collection has been capturing the imagination for generations.



GALLERY 234

***Fuddling Cup (1639), England, London***

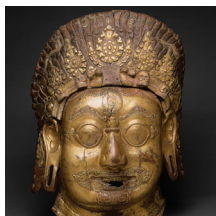
A popular novelty of the time, these linked vessels must be drunk from in a particular order to avoid an embarrassing spill.



GALLERY 232

***"Am I Not a Man and a Brother?" (c. 1787)  
by Wedgwood Manufactory***

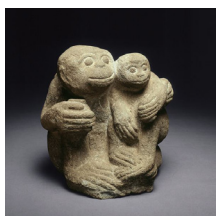
Meant to be worn on a hat or as a brooch, medallions like this were made in limited quantity and given to abolitionist-minded Englishman during the time of slavery. A similar piece was sent to Benjamin Franklin.



GALLERY 140

***Head of Bhairava, a Horrific Form of God Shiva  
(17th century), Nepal***

Return to level one and the gallery of Southeast Asian art. Find the Head of Bhairava looking down upon you. Works like this are placed high on the wall to give a glimpse of the impressive nature of their original installation.



GALLERY 142

***Simian Mother and Child (13th century), Indonesia, Java***

On your way to the next work, notice the windows on the north side of the gallery installed during the Renzo Piano-designed renovation. Did you realize you were walking on a bridge? The smiling faces on this Indonesian sculpture mark the end of your half-mile journey through the museum. Well done!